

The Twinflow TP20 has been, specifically, designed for processing two component thixotropic or high viscosity non-pourable resin systems at a volumetric ratio range from 1:1 to 20:1. Materials such as Methacrylates, Silicones, Epoxies, Polyurethanes and others are all suitable for processing through this machine, which still incorporates the proven technology of the Posiload pump, which has been at the heart of Liquid Control machines for over 35 years.

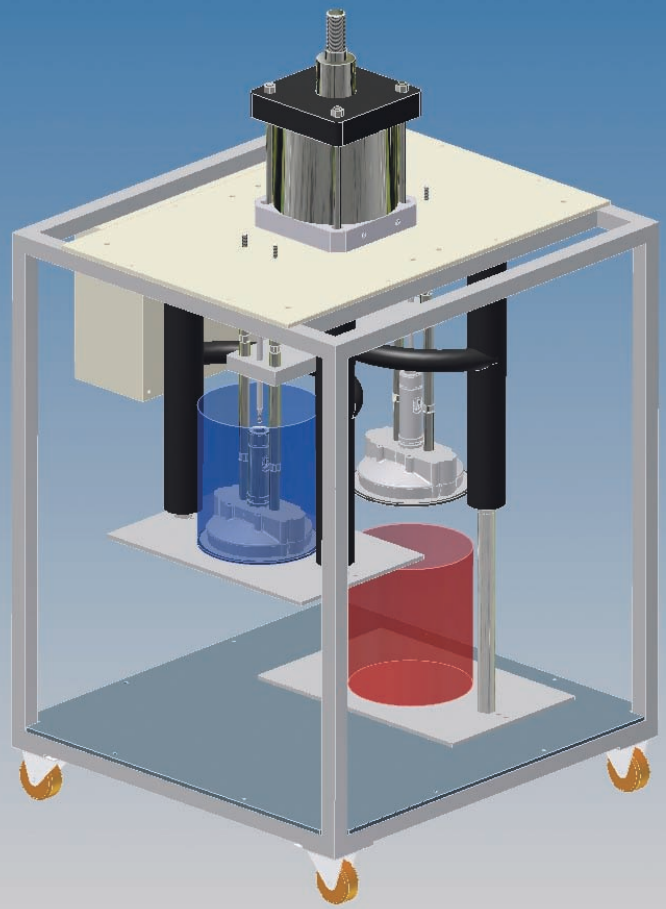
The Twinflow TP20 will receive resin parts A and B in 20/25 litre pails and process directly from them, at the required ratio, without the need to decant into other equipment, thus removing the need for additional pumps. This innovative principle has not only reduced the working parts normally associated with this type of equipment greatly, thus reducing serviceable parts, but also increased reliability and performance.

The TP20 is ideal for precisely metering and then mixing the 2 components, either simply into containers, for manual application of resin or adhesives, or directly applying the mixed materials from the mixing head onto the work-piece in a bead form, for applications such as structural bonding, gasketing or other such applications where high viscosity mixed resin systems are required to be applied directly from the machine onto the component.

The versatile design can accommodate a variety of standard options, allowing manual gun application with trigger actuation or robot controlled precision dispensing .

For many years we have recognised a need for this machine and now at last we are pleased to be able to add it to our product offering.

Twinflow TP20



Twinflow TP20

Standard Features

Pumps:

- “Posiload” precision positive displacement metering pumps
- Stainless Steel 304 wetted parts.

Drum Follower:

- Aluminium with Nylon scraper and Nitrile wiper.

Machine Drive:

- 200mm air cylinder with single control shaft and twin drive shafts.

Reservoirs:

- Suppliers 20/25 lit pails
- Low level sensors on pail lifts

Mixing Head:

- ADU high output block.
- Static mixer.
- Mounted on machine frame.

Hoses:

- PTFE lined Stainless Steel braided.

Control:

- Foot pedal actuated
- Shot size via adjustable fixed switch
- Speed control via pneumatic regulation

Finish:

- Epoxy sprayed frame on robust castors
- plated M/S – Aluminium

Standard Options

Machine Drive:

- Smaller/Larger Air Cylinder
- Electric Drive
- Hydra-check stroke speed control

Drum Follower:

- Follower Heating
- Viton/EP Wiper Seals
- Different sized seals to suit pail size

Hoses:

- Heating

Mixing Head Options:

- 1/4 BSP Twinmixer
- Hand held, trigger actuated mix gun
- Rotary/Static Mixing Head
- Dynamic mixing head with control.
- Solvent Flush system

Flow Monitoring:

- Precision flow monitors to give ratio readout and indicate fault conditions

Control Options:

- Shot size control via return switch on leadscrew adjustment.
- Speed control via hydraulic cylinder PLC with I/O for external controls

Liquid Control Limited

Stewarts Road, Finedon Road Industrial Estate
Wellingborough, Northants NN8 4RJ, England
Tel.: +44 (0) 1933 277571 - Fax: +44 (0) 1933 440273
www.liquidcontrol.co.uk

Products sold by Liquid Control Ltd are subject to ongoing development and improvement. The right is therefore to alter specifications without notice.